



INSTALLATION INSTRUCTIONS

USE FOR THE FONT 50

Font50 Wall Mounted Bottle Filler Installation Instructions

What's included

FONT50 with Allen Key security screws
CR123 Batteries (2x)
9 Wall Mounting screws and plugs for solid walls
3/4" BSP to 3/8th John Guest fitting

Optional (Not included)

PFRAILKIT – Plumbing installation and filter kit
3/8" LDPE Tube for waste

Tools Required

Drill and Drill Bits
Level
2.5mm Allen Key (supplied)

1/4" LDPE Tubing for incoming water.
3/8" Push Fit to 32mm clamp for waste connection

1. Step by step Installation:



- Position the rear mounting bracket on the wall.
- Use a level to ensure the bracket is level.
- Mark the 9 fixing points on the wall.
- Drill holes at the marked points.
- Insert the wall plugs and secure the bracket to the wall with the screws.

2. Installing the filter bracket:



- Fix the filter bracket inside the rear bracket area
- Mount the water filter onto the filter bracket

Connecting the water inlet:

- Attach the water inlet bulkhead fitting to the filter.
- Ensure the water flow is correct as indicated on the filter.

3. Installing the batteries:



- Open the battery housing inside the Fountain cover.
- Insert 2 x CR123 Batteries to power the flow meter and bottle saving odometer.



- **4. Connecting the water feed pipe:**
- Connect the water feed pipe from the filter outlet to the flow meter located inside the top of the Fountain cover unit.

Please note if installing in a covered out door space please ensure all pipework and the filter is lagged to prevent freezing.

6. Mounting the dispenser body:



- Carefully position the dispenser body onto the wall bracket.
- Secure the body with the 2 Allen key screws located at the bottom left and right sides of the Body.

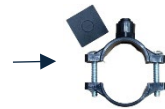
Connecting the water feed pipe:



- Connect the 1/4" water feed pipe to the bulkhead fitting at the bottom of the dispenser.

Connecting the drainage pipe:

- Connect a 3/4" BSP to 3/8th John Guest Fitting to the drainage outlet on the unit
- Attach a 3/8th pipe to the fitting. **(Not included)**
- Connect 3/8" drainage pipe to waste receptical.
- Optional 3/8" Push Fit to 32mm clamp to waste pipe connection **(Not included)**



Installing the pipework cover:



- Screw into place with the 4 x Allen key screws to the pipework cover at the bottom of the unit.
- This is to prevent tampering with the pipe connections.

Testing the unit:



- Once all the connections are secure, test the unit by dispensing water.
- The counter on the top should increase by 1 for every 500ml of water dispensed, indicating the number of plastic bottles saved.
- Test the drain connections and that the water flows smoothly.
- The waste pipe must have a fall and the receptical must be lower than the connection to the unit.

NO.	DESCRIPTION	CODE	NO.	DESCRIPTION	CODE
1	Fountain Cover	FONT501	8	Valve Connection	FONT508
1b	Allen key 2.5mm Screws x6	FONT501B	9	John Guest ¼" Tube (x45cm)	FONT509
1c	Wall Mounting Bracket with Drip Tray	FONT501C	11	John Guest ¼" Tube (x4cm)	FONT5011
1d	Pipework Cover	FONT501D	12	John Guest ¼" Elbow	FONT5012
2	3/4" BSP to 3/8" Push-fit Reducer	REDU3438	13,14	Fixing Plate & Battery Box	FONT5013
4	Outlet Cover	FONT504	15	Drain Connector	FONT5015
5,10	Bottle Savings Calculator & Flow Meter	FONT505	16	Allen Key 2.5mm	FONT5016
6	Instant Angle Valve	FONT506	17	Batteries x2	FONT5017
7	Hex Nut	FONT507	18	3/8" Push Fit to 32mm clamp for waste connection (Optional)	FONT5018

